

H A V E N 20

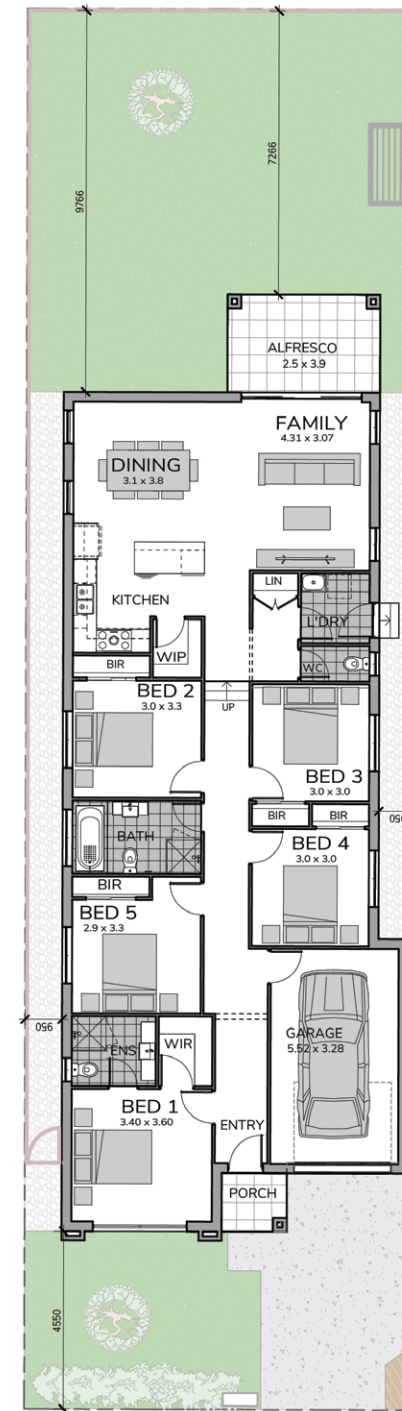
 5 2.5 1 | URBAN FACADE | LOT 298

Uncover your dream haven

Welcome to Haven, a thoughtfully designed family home that maximizes space on a narrow block. The home offers expansive living areas both inside and out, featuring a bright, open-plan kitchen, dining, and family room at the rear.

With four generous bedrooms, the private master suite includes an ensuite and walk-in robe, ideally located away from the kids' rooms for added privacy.

Perfect for both family living and entertaining, Haven also includes a spacious alfresco courtyard for weekend BBQs. With a perfect blend of value, style, and smart design, Haven is the ideal home for your family.



Ground Floor	152.55 m ²	Porch	2.51 m ²
Garage	20.49 m ²	Total	185.32 m²
Alfresco	9.78 m ²	Lot Size	358.60 m²