

EVE 22

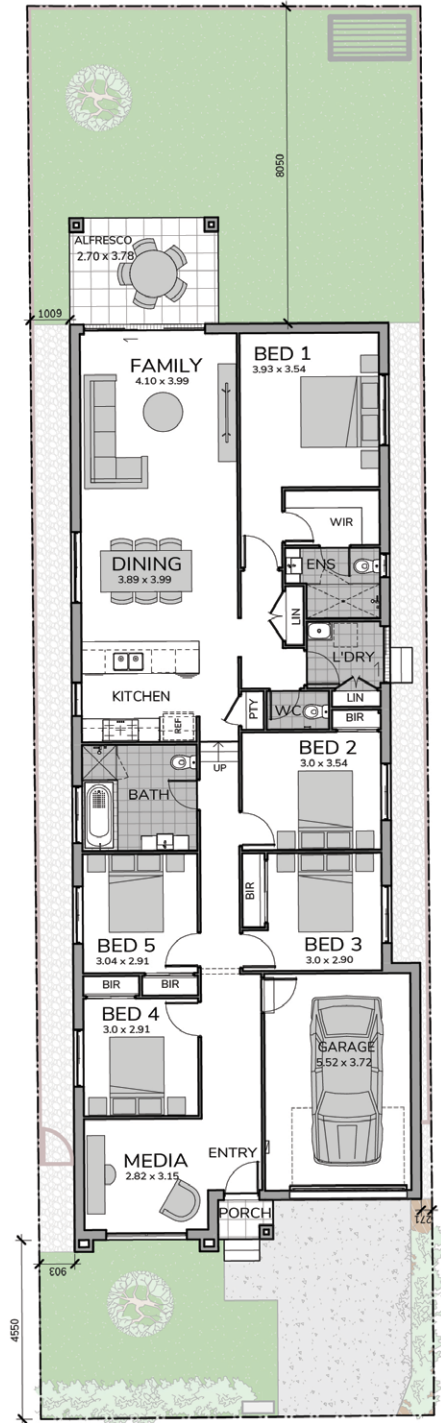
 5  3.5  1 | URBAN FACADE | LOT 295

Expand your lifestyle possibilities

The Eve is a stunning contemporary 4-bedroom home that proves you don't need a wide block to have it all. Designed for slender blocks, it still delivers on everything you want in a family home, offering exceptional value for money.

The Eve boasts flexible living spaces, including a unique media or theatre room near the entrance – a special feature you wouldn't expect. At the rear, a beautiful alfresco area provides the perfect setting for outdoor entertaining with friends.

The spacious open-plan kitchen, dining, and family room is designed for comfort, offering ample space for entertaining, family meals, and cozy evenings together.



Ground Floor	165.81 m ²	Porch	1.40 m ²
Garage	23.01 m ²	Total	200.44 m²
Alfresco	10.22 m ²	Lot Size	359.10 m²