

# GRACE (SPECIAL 25)

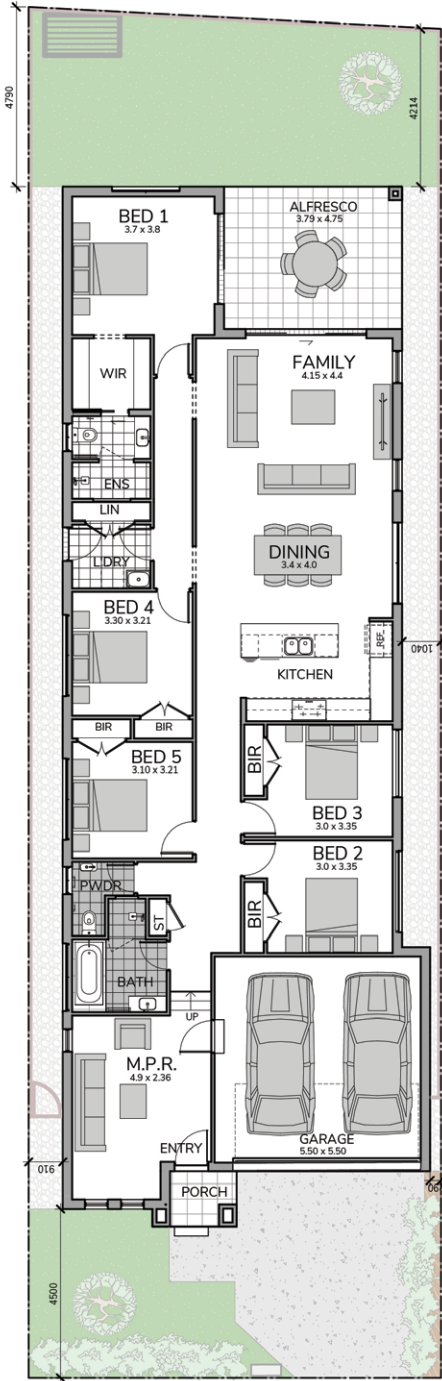
5 2 2 | CONTEMPORARY STARTER FACADE | LOT 294

## A considered choice for younger families

Ideal for families with young children, the Grace offers a practical design that provides dedicated entertainment zones while maintaining personal space for everyone.

The Grace's appeal lies in its versatility, with a well-thought-out floorplan that blends open-plan living at the rear of the home with expansive living areas and contemporary design features. It's the perfect setup for both family time and entertaining guests.

Designed with modern family living in mind, the 4-bedroom Grace accommodates families with children or teenagers in style. The spacious master bedroom, tucked at the rear of the home with a walk-in robe and ensuite, is thoughtfully separated from the teen bedrooms at the front, giving everyone their own space to enjoy.



Ground Floor	193.68 m <sup>2</sup>	Porch	2.84 m <sup>2</sup>
Garage	33.14 m <sup>2</sup>	<b>Total</b>	<b>247.65 m<sup>2</sup></b>
Alfresco	18.00 m <sup>2</sup>	<b>Lot Size</b>	<b>398.70 m<sup>2</sup></b>