

REMI 22

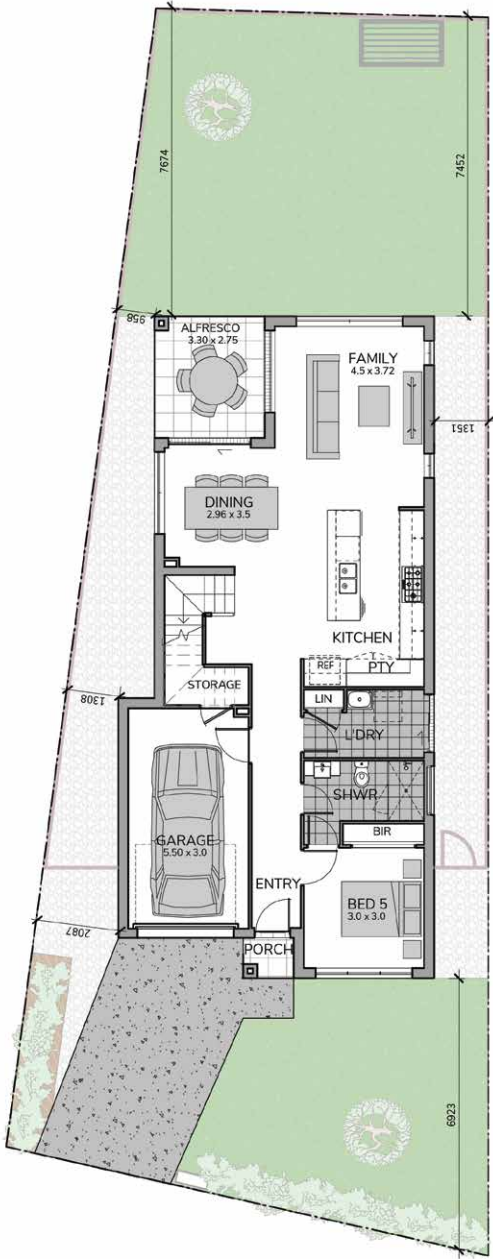
5 3.5 1 | URBAN FACADE | LOT 27

Smart design, perfectly positioned near amenities

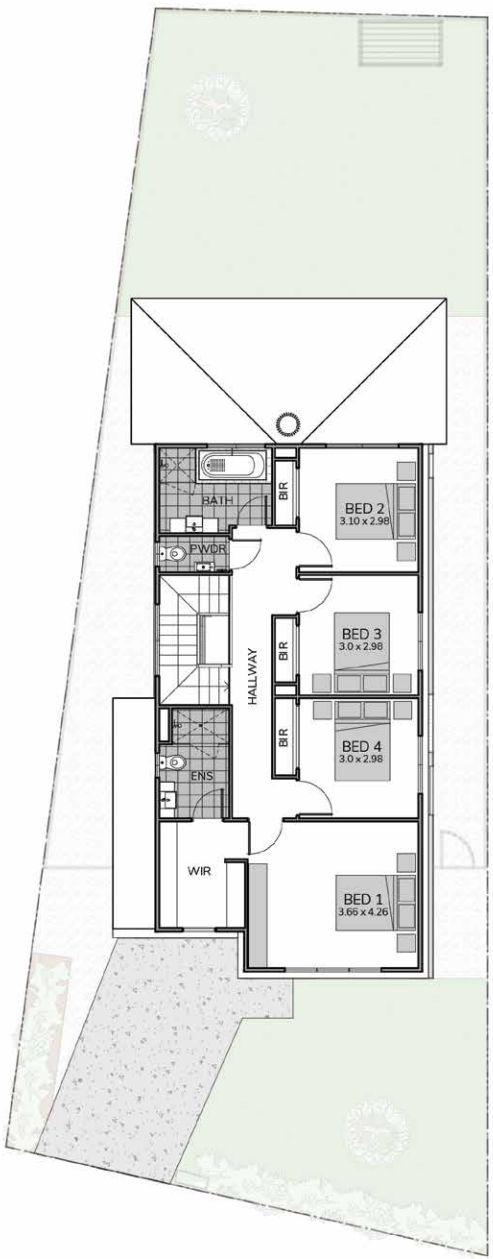
Presenting the carefully crafted Remi, designed to make the most of smaller blocks without sacrificing style, practicality, or space. Offering nearly 22 squares of family-friendly living, the well-priced Remi is packed with features that enhance your everyday lifestyle.

At the heart of the home is a bright, open-plan living area that effortlessly blends the kitchen, dining, and family spaces into one cohesive zone. Ideal for modern living and entertaining, the kitchen comes equipped with high-end appliances and opens to a cozy dining area.

Step outside to a fantastic alfresco area, perfect for outdoor dining and entertaining with friends and family. The flexible layout allows for a front lounge or an optional fifth guest bedroom with an ensuite, providing versatile accommodation for all your needs.



GROUND FLOOR



FIRST FLOOR

Ground Floor	89.74 m ²	Porch	1.26 m ²
First Floor	85.24 m ²	Total	203.41 m²
Garage	18.85 m ²	Lot Size	303.30 m²
Alfresco	8.33 m ²		