

# REMI 22

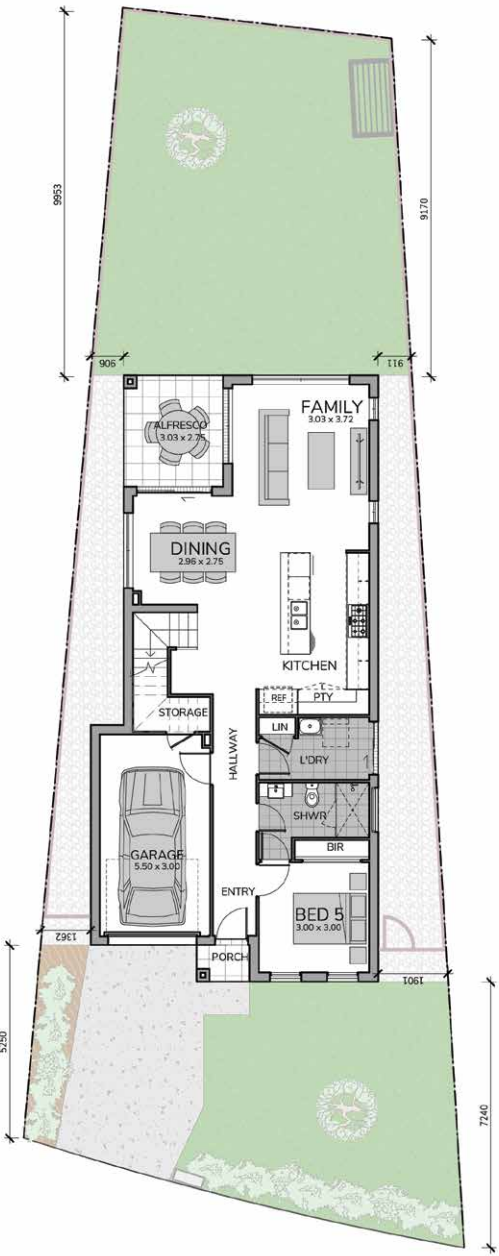
5 3.5 1 | URBAN FACADE | LOT 26

## Clever design close to amenities

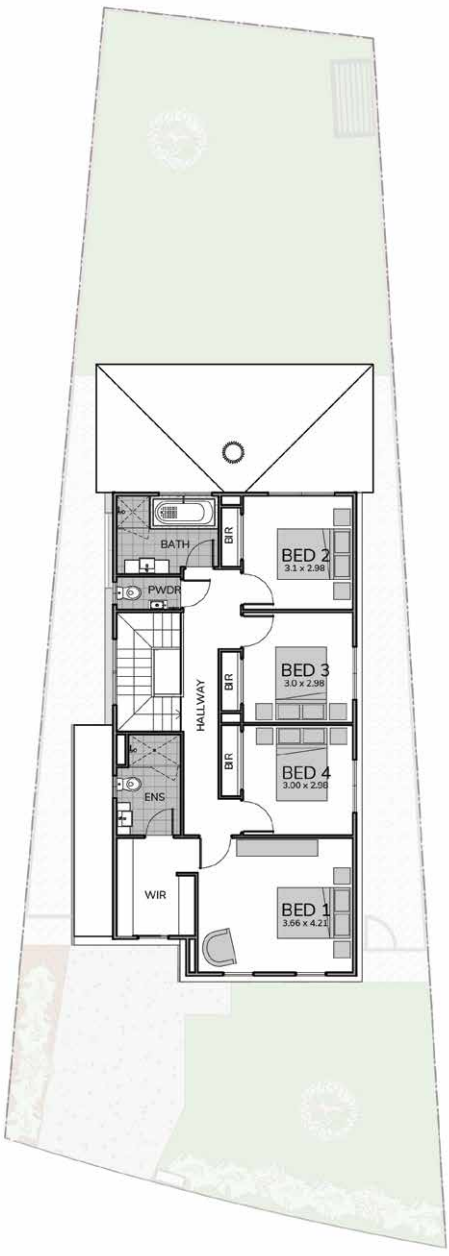
Introducing the thoughtfully designed Remi, tailored to fit smaller blocks without compromising on style, functionality or space. The well priced Remi boasts almost 22 SQs of family living, with an abundance of features to enhance your everyday lifestyle.

At the heart of the home is a light-filled open-plan living area that seamlessly integrates the kitchen, dining, and family living spaces together as one. Ideal for modern living and entertaining, the kitchen is equipped with top-of-the-line appliances and overlooks a cosy dining space.

Outside, a fantastic alfresco area is perfect for enjoying outdoor gatherings and barbecues with friends and family. The flexible design allows for either a front lounge or a fifth guest bedroom with an ensuite, covering all accommodation needs.



GROUND FLOOR



FIRST FLOOR

|              |                      |                 |                             |
|--------------|----------------------|-----------------|-----------------------------|
| Ground Floor | 89.18 m <sup>2</sup> | Porch           | 1.45 m <sup>2</sup>         |
| First Floor  | 87.36 m <sup>2</sup> | <b>Total</b>    | <b>205.02 m<sup>2</sup></b> |
| Garage       | 18.85 m <sup>2</sup> | <b>Lot Size</b> | <b>309.62 m<sup>2</sup></b> |
| Alfresco     | 8.20 m <sup>2</sup>  |                 |                             |